



PT. NUSANTARA SAWIT PERSADA

PROGRESS REPORT - Kebun Rasau Tumbuh

KONTRAK NO :

1. SPK No. RSTE/JKTO/031/06/2012-MTT
2. SPK No. RSTE/JKTO/032/06/2012-Pasar Pikul
3. RSTE/JKTO/016/09/2014-MTT

Jenis Pekerjaan	Unit	Vol SPK 01 Jun 2012 s.d 31 Des 2014	Realisasi			%
			AKUMULASI S.D BULAN LALU	BAPP Des 2014	S.D BAPP Des 2014	
MTT - 031	M3	51.600,00				
0 s/d 5 km			47.566,00	-	47.566,00	92,18%
> 5 s/d 10 km			2.432,00	-	2.432,00	4,71%
> 10 s/d 15 km			-	-	-	0,00%
> 15 s/d 20 km			-	-	-	0,00%
> 20 s/d 25 km			-	-	-	0,00%
MTT - 016	M3	50.000,00				
0 s/d 5 km			12.020,00	1.952,00	13.972,00	27,94%
> 5 s/d 10 km			9.752,00	2.292,00	12.044,00	24,09%
> 10 s/d 15 km			-	-	-	0,00%
> 15 s/d 20 km			-	-	-	0,00%
> 20 s/d 25 km			-	-	-	0,00%
Pasar Pikul	M	900.000,00	799.254,00	-	799.254,00	88,81%

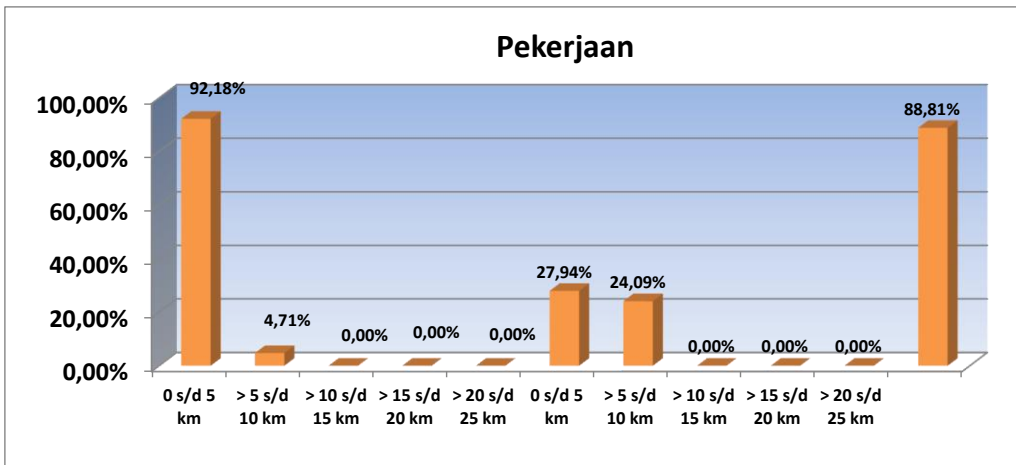
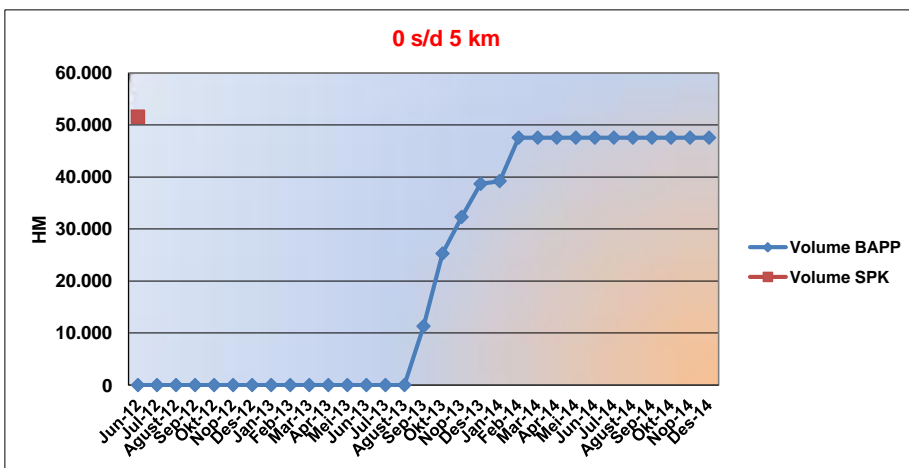


Chart & Detail Per Month

Jenis Pekerjaan	Unit	Vol SPK	Realisasi	%
MTT - 031	M3	51.600,00	47.566,00	0,00%



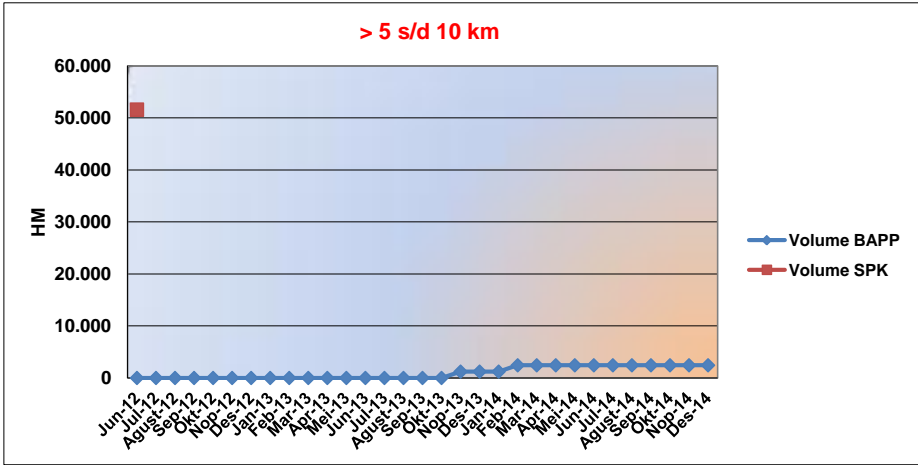
Bulan	Hasil per Bulan	Kumulatif
Jun-12	-	-
Jul-12	-	-
Aug-12	-	-
Sep-12	-	-
Oct-12	-	-
Nov-12	-	-
Dec-12	-	-
Jan-13	-	-
Feb-13	-	-
Mar-13	-	-
Apr-13	-	-
May-13	-	-
Jun-13	-	-
Jul-13	-	-
Aug-13	-	-
Sep-13	11.316	11.316,00
Oct-13	13.976	25.292,00
Nov-13	7.024	32.316,00
Dec-13	6.366	38.682,00
Jan-14	532	39.214,00
Feb-14	8.352	47.566,00
Mar-14	-	47.566,00
Apr-14	-	47.566,00
May-14	-	47.566,00
Jun-14	-	47.566,00
Jul-14	-	47.566,00
Aug-14	-	47.566,00
Sep-14	-	47.566,00
Oct-14	-	47.566,00
Nov-14	-	47.566,00
Dec-14	-	47.566,00
	47.566	



PT. NUSANTARA SAWIT PERSADA

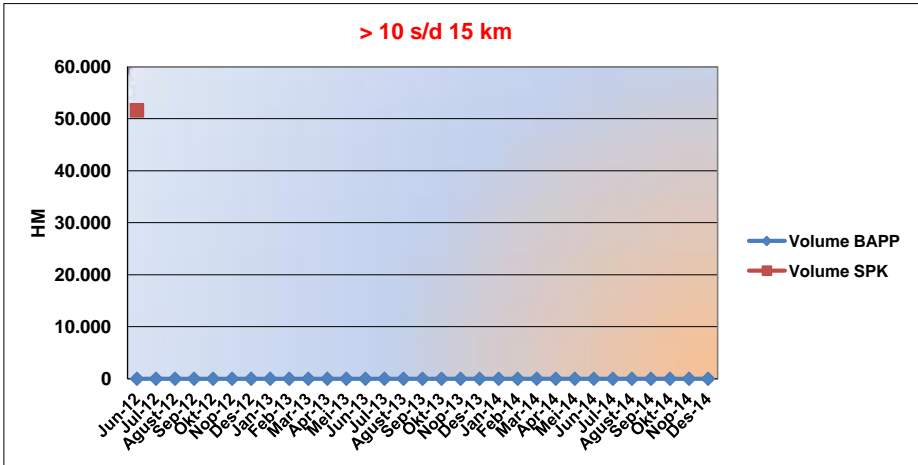
PROGRESS REPORT - Kebun Rasau Tumbuh

Jenis Pekerjaan	Unit	Vol SPK	Realisasi	%
MTT - 031	M3	51.600,00	2.432,00	0,00%



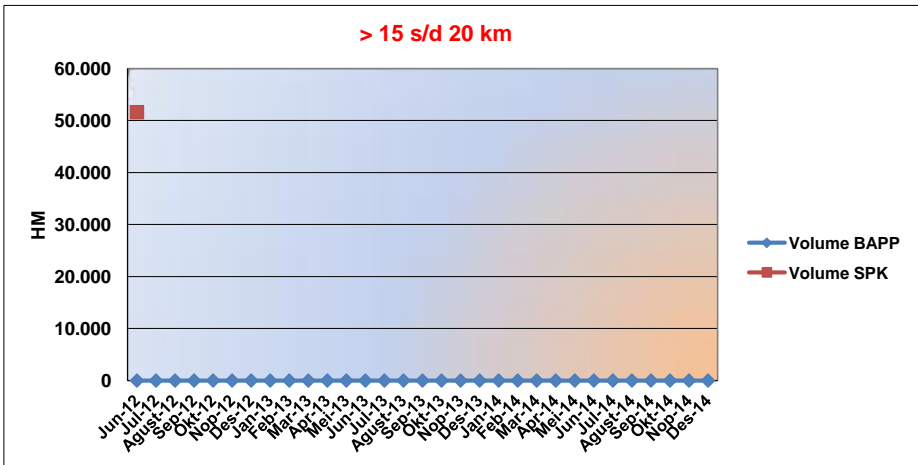
Bulan	Hasil per Bulan	Kumulatif
Jun-12	-	-
Jul-12	-	-
Agus-12	-	-
Sep-12	-	-
Oktober-12	-	-
Nov-12	-	-
Des-12	-	-
Jan-13	-	-
Feb-13	-	-
Mar-13	-	-
Apr-13	-	-
May-13	-	-
Jun-13	-	-
Jul-13	-	-
Agus-13	-	-
Sep-13	-	-
Oktober-13	-	-
Nov-13	1.216	1.216,00
Des-13	-	1.216,00
Jan-14	-	1.216,00
Feb-14	1.216	2.432,00
Mar-14	-	2.432,00
Apr-14	-	2.432,00
May-14	-	2.432,00
Jun-14	-	2.432,00
Jul-14	-	2.432,00
Agus-14	-	2.432,00
Sep-14	-	2.432,00
Oktober-14	-	2.432,00
Nov-14	-	2.432,00
Des-14	-	2.432,00
	2.432	

Jenis Pekerjaan	Unit	Vol SPK	Realisasi	%
MTT - 031	M3	51.600,00	-	0,00%



Bulan	Hasil per Bulan	Kumulatif
Jun-12	-	-
Jul-12	-	-
Agus-12	-	-
Sep-12	-	-
Oktober-12	-	-
Nov-12	-	-
Des-12	-	-
Jan-13	-	-
Feb-13	-	-
Mar-13	-	-
Apr-13	-	-
May-13	-	-
Jun-13	-	-
Jul-13	-	-
Agus-13	-	-
Sep-13	-	-
Oktober-13	-	-
Nov-13	-	-
Dec-13	-	-
Jan-14	-	-
Feb-14	-	-
Mar-14	-	-
Apr-14	-	-
May-14	-	-
Jun-14	-	-
Jul-14	-	-
Agus-14	-	-
Sep-14	-	-
Oktober-14	-	-
Nov-14	-	-
Dec-14	-	-

Jenis Pekerjaan	Unit	Vol SPK	Realisasi	%
MTT - 031	M3	51.600,00	-	0,00%



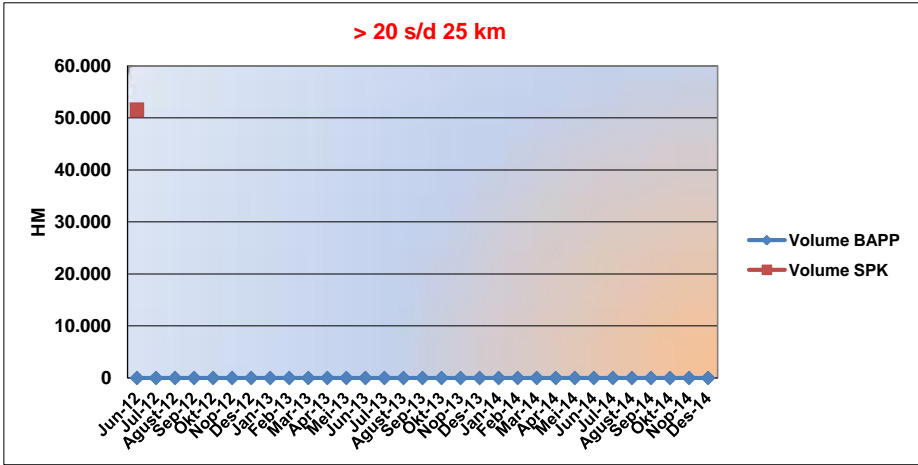
Bulan	Hasil per Bulan	Kumulatif
Jun-12	-	-
Jul-12	-	-
Agus-12	-	-
Sep-12	-	-
Oktober-12	-	-
Nov-12	-	-
Des-12	-	-
Jan-13	-	-
Feb-13	-	-
Mar-13	-	-
Apr-13	-	-
May-13	-	-
Jun-13	-	-
Jul-13	-	-
Agus-13	-	-
Sep-13	-	-
Oktober-13	-	-
Nov-13	-	-
Dec-13	-	-
Jan-14	-	-
Feb-14	-	-
Mar-14	-	-
Apr-14	-	-
May-14	-	-
Jun-14	-	-
Jul-14	-	-
Agus-14	-	-
Sep-14	-	-
Oktober-14	-	-
Nov-14	-	-
Dec-14	-	-



PT. NUSANTARA SAWIT PERSADA

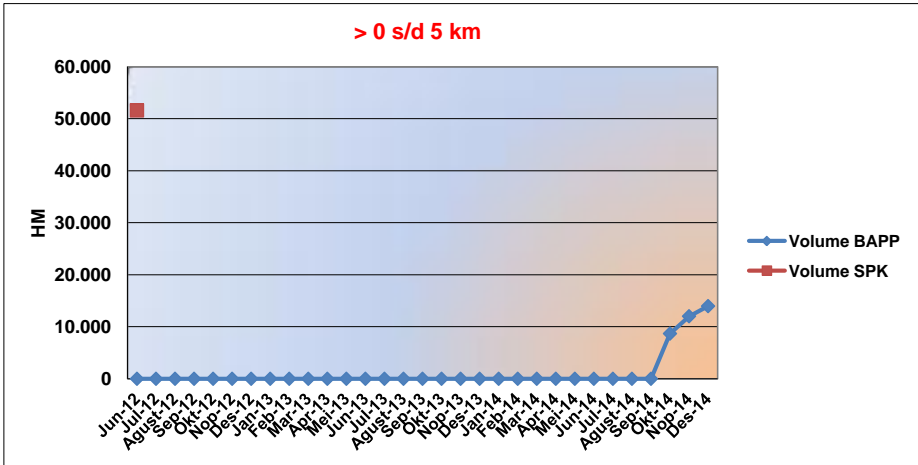
PROGRESS REPORT - Kebun Rasau Tumbuh

Jenis Pekerjaan	Unit	Vol SPK	Realisasi	%
MTT - 031	M3	51.600,00	-	0,00%



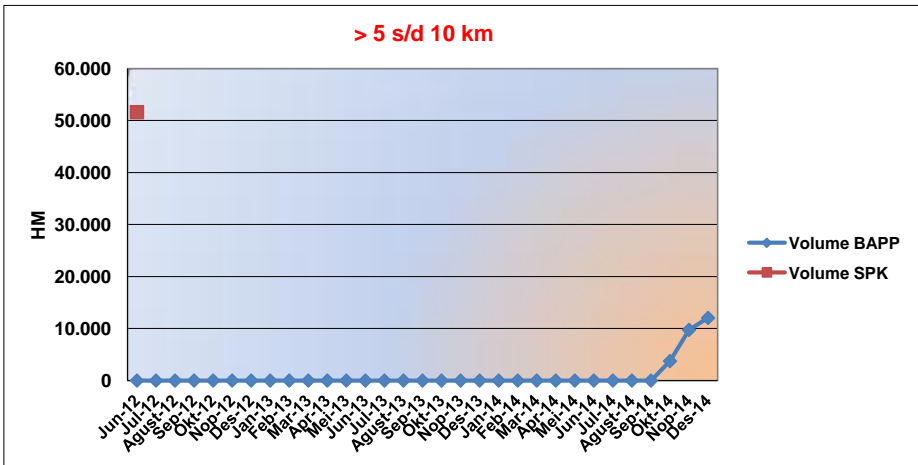
Bulan	Hasil per Bulan	Kumulatif
Jun-12	-	-
Jul-12	-	-
Aug-12	-	-
Sep-12	-	-
Oct-12	-	-
Nov-12	-	-
Dec-12	-	-
Jan-13	-	-
Feb-13	-	-
Mar-13	-	-
Apr-13	-	-
May-13	-	-
Jun-13	-	-
Jul-13	-	-
Aug-13	-	-
Sep-13	-	-
Oct-13	-	-
Nov-13	-	-
Dec-13	-	-
Jan-14	-	-
Feb-14	-	-
Mar-14	-	-
Apr-14	-	-
May-14	-	-
Jun-14	-	-
Jul-14	-	-
Aug-14	-	-
Sep-14	-	-
Oct-14	-	-
Nov-14	-	-
Dec-14	-	-

Jenis Pekerjaan	Unit	Vol SPK	Realisasi	%
MTT - 016	M3	50.000,00	13.972,00	27,94%



Bulan	Hasil per Bulan	Kumulatif
Jun-12	-	-
Jul-12	-	-
Aug-12	-	-
Sep-12	-	-
Oct-12	-	-
Nov-12	-	-
Dec-12	-	-
Jan-13	-	-
Feb-13	-	-
Mar-13	-	-
Apr-13	-	-
May-13	-	-
Jun-13	-	-
Jul-13	-	-
Aug-13	-	-
Sep-13	-	-
Oct-13	-	-
Nov-13	-	-
Dec-13	-	-
Jan-14	-	-
Feb-14	-	-
Mar-14	-	-
Apr-14	-	-
May-14	-	-
Jun-14	-	-
Jul-14	-	-
Aug-14	-	-
Sep-14	-	-
Oct-14	8.688	8.688,00
Nov-14	3.332	12.020,00
Dec-14	1.952	13.972,00
	13.972	

Jenis Pekerjaan	Unit	Vol SPK	Realisasi	%
MTT - 016	M3	50.000,00	12.044,00	24,09%



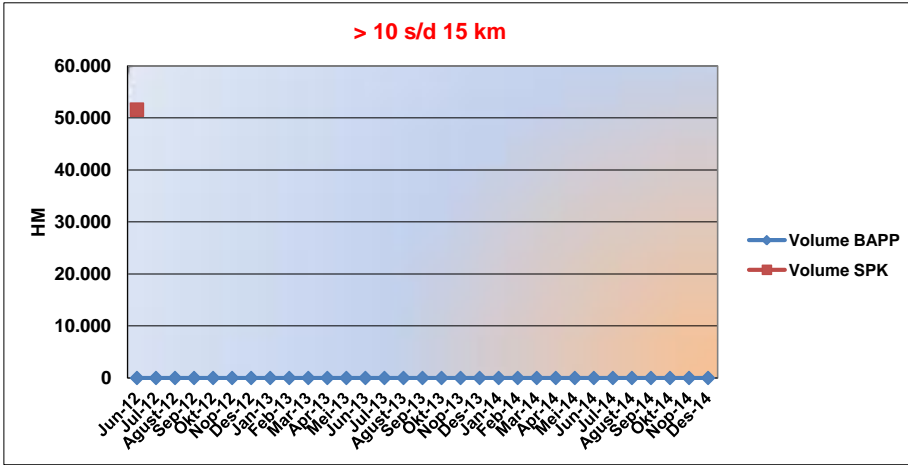
Bulan	Hasil per Bulan	Kumulatif
Jun-12	-	-
Jul-12	-	-
Aug-12	-	-
Sep-12	-	-
Oct-12	-	-
Nov-12	-	-
Dec-12	-	-
Jan-13	-	-
Feb-13	-	-
Mar-13	-	-
Apr-13	-	-
May-13	-	-
Jun-13	-	-
Jul-13	-	-
Aug-13	-	-
Sep-13	-	-
Oct-13	-	-
Nov-13	-	-
Dec-13	-	-
Jan-14	-	-
Feb-14	-	-
Mar-14	-	-
Apr-14	-	-
May-14	-	-
Jun-14	-	-
Jul-14	-	-
Aug-14	-	-
Sep-14	-	-
Oct-14	3.744	3.744,00
Nov-14	6.008	9.752,00
Dec-14	2.292	12.044,00
	12.044	



PT. NUSANTARA SAWIT PERSADA

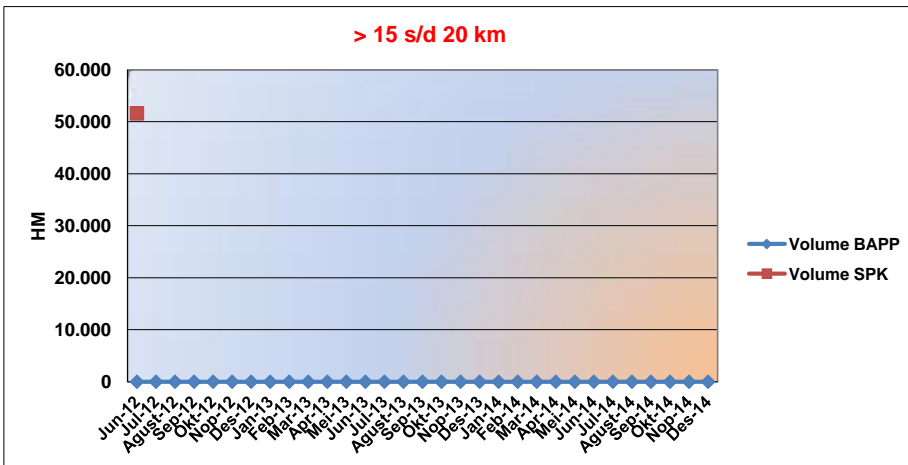
PROGRESS REPORT - Kebun Rasau Tumbuh

Jenis Pekerjaan	Unit	Vol SPK	Realisasi	%
MTT - 016	M3	50.000,00	-	0,00%



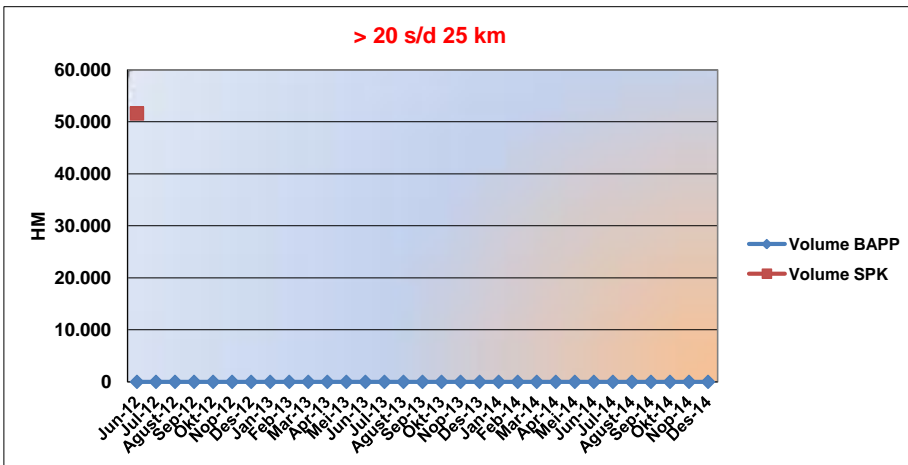
Bulan	Hasil per Bulan	Kumulatif
Jun-12	-	-
Jul-12	-	-
Agus-12	-	-
Sep-12	-	-
Oktober-12	-	-
Nov-12	-	-
Des-12	-	-
Jan-13	-	-
Feb-13	-	-
Mar-13	-	-
Apr-13	-	-
May-13	-	-
Jun-13	-	-
Jul-13	-	-
Agus-13	-	-
Sep-13	-	-
Oktober-13	-	-
Nov-13	-	-
Des-13	-	-
Jan-14	-	-
Feb-14	-	-
Mar-14	-	-
Apr-14	-	-
May-14	-	-
Jun-14	-	-
Jul-14	-	-
Agus-14	-	-
Sep-14	-	-
Oktober-14	-	-
Nov-14	-	-
Des-14	-	-

Jenis Pekerjaan	Unit	Vol SPK	Realisasi	%
MTT - 016	M3	50.000,00	-	0,00%



Bulan	Hasil per Bulan	Kumulatif
Jun-12	-	-
Jul-12	-	-
Agus-12	-	-
Sep-12	-	-
Oktober-12	-	-
Nov-12	-	-
Des-12	-	-
Jan-13	-	-
Feb-13	-	-
Mar-13	-	-
Apr-13	-	-
May-13	-	-
Jun-13	-	-
Jul-13	-	-
Agus-13	-	-
Sep-13	-	-
Oktober-13	-	-
Nov-13	-	-
Des-13	-	-
Jan-14	-	-
Feb-14	-	-
Mar-14	-	-
Apr-14	-	-
May-14	-	-
Jun-14	-	-
Jul-14	-	-
Agus-14	-	-
Sep-14	-	-
Oktober-14	-	-
Nov-14	-	-
Des-14	-	-

Jenis Pekerjaan	Unit	Vol SPK	Realisasi	%
MTT - 016	M3	50.000,00	-	0,00%



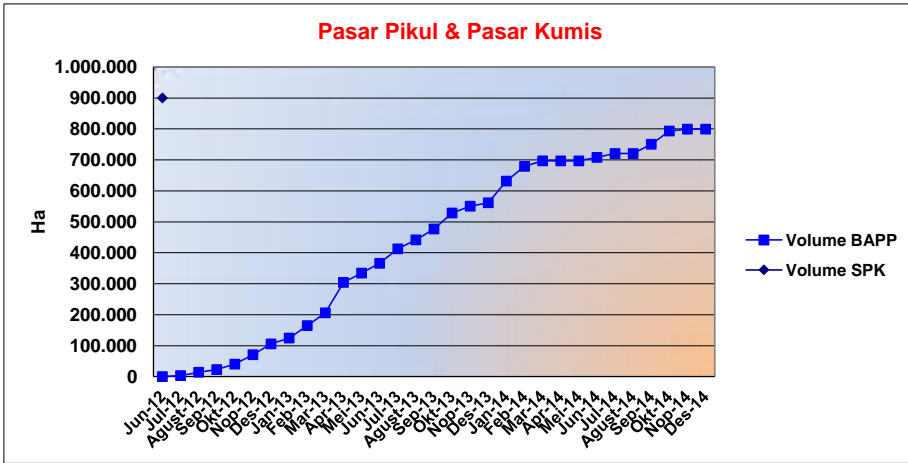
Bulan	Hasil per Bulan	Kumulatif
Jun-12	-	-
Jul-12	-	-
Agus-12	-	-
Sep-12	-	-
Oktober-12	-	-
Nov-12	-	-
Des-12	-	-
Jan-13	-	-
Feb-13	-	-
Mar-13	-	-
Apr-13	-	-
May-13	-	-
Jun-13	-	-
Jul-13	-	-
Agus-13	-	-
Sep-13	-	-
Oktober-13	-	-
Nov-13	-	-
Des-13	-	-
Jan-14	-	-
Feb-14	-	-
Mar-14	-	-
Apr-14	-	-
May-14	-	-
Jun-14	-	-
Jul-14	-	-
Agus-14	-	-
Sep-14	-	-
Oktober-14	-	-
Nov-14	-	-
Des-14	-	-



PT. NUSANTARA SAWIT PERSADA

PROGRESS REPORT - Kebun Rasau Tumbuh

Jenis Pekerjaan	Unit	Vol SPK	Realisasi	%
Pasar Pikul	M	900.000,00	799.254,00	88,81%



Bulan	Hasil per Bulan	Kumulatif
Jun-12	-	-
Jul-12	3.304	3.304,00
Aug-12	10.770	14.074,00
Sep-12	8.785	22.859,00
Oct-12	17.401	40.260,00
Nov-12	30.524	70.784,00
Dec-12	34.873	105.657,00
Jan-13	18.808	124.465,00
Feb-13	40.282	164.747,00
Mar-13	41.200	205.947,00
Apr-13	98.266	304.213,00
May-13	30.098	334.311,00
Jun-13	31.612	365.923,00
Jul-13	46.739	412.662,00
Aug-13	29.033	441.695,00
Sep-13	35.208	476.903,00
Oct-13	51.531	528.434,00
Nov-13	21.958	550.392,00
Dec-13	11.167	561.559,00
Jan-14	69.910	631.469,00
Feb-14	47.515	678.984,00
Mar-14	17.748	696.732,00
Apr-14	-	696.732,00
May-14	-	696.732,00
Jun-14	11.338	708.070,00
Jul-14	12.540	720.610,00
Aug-14	-	720.610,00
Sep-14	29.860	750.470,00
Oct-14	42.764	793.234,00
Nov-14	6.020	799.254,00
Dec-14	-	799.254,00
	799.254	